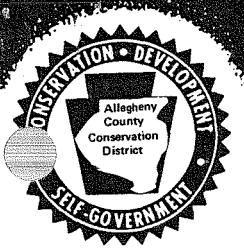


Allegheny County Conservation District



Lexington Technology Park, Building 1, Ste. 102 - 400 North Lexington Street - Pittsburgh, PA 15208-2566
Phone (412) 241-7645 - Fax (412) 242-6165

February 5, 2002

Michael Sherman
Department of Environmental Protection
Growing Greener Grants Center
9th Floor - Rachel Carson State Office Building
400 Market Street
P. O. Box 8776
Harrisburg, PA 17105-8776

Dear Mr. Sherman:

This letter acknowledges that the Allegheny County Conservation District is aware that the Chartiers Creek Nature Conservancy plans to submit an application for a Growing Greener Grant for the Lower Chartiers Creek Watershed Abandoned Mine Drainage Rehabilitation Project.

Thank you for informing us of your proposal.

Very truly yours,

Bert S. Hester, Chairman
Board of Directors

RSH:djs

From: john hamm <jhamm@city-net.com>
rich@fyi.net <rich@fyi.net>

Date: Sunday, February 03, 2002 11:37 PM

Subject: growing greener grant endorsement letter: chartiers nature conservancy/amd chartiers creek

attached is file: description of a continuing funding request for a grant which we received in 2001-02. we requested \$110,000, but only received \$44,000, so we have phased completion of the goal/objectives over 2 years. we had requested letter of support from the conservation district last year, but did not receive, even though a description of project was forwarded. The Wes Pa Coalition for Abandoned Mine Reclamation (WPCAMR)/Deb Simko endorsed then and is sending us a letter for this grant year's request.

you could fax me (412-922-4171) or email (jhamm@city-net.com) hopefully before wednesday, the day i need to send application.

thank you.

John Hamm, Grant Project Manager
Vice President/Chartiers Nature Conservancy (PO Box 44221 Crafton 15205)
home address: 205 Eton Rd 15205
2-922-4171 (phone/fax)

Lower Chartiers Creek Watershed Abandoned Mine Drainage Rehabilitation Plan

EXECUTIVE SUMMARY

Chartiers Creek is a major stream in southwestern Pennsylvania that has its headwaters in Washington County, flows northward through Allegheny County, and discharges into the Ohio River in McKees Rocks. The stream has an urban context that distinguishes it from most other streams being considered by the Commonwealth for restoration. A portion of the lower watershed lies within Pittsburgh city limits. More than 200,000 people live in the watershed. The stream has remarkable riparian features, but currently gets little recreational use because of water quality problems.

The Chartiers Nature Conservancy (CNC) completed a Rivers Conservation Plan for lower Chartiers Creek in March 2001. The number one water quality degradation parameter identified in the Plan is abandoned coalmine discharges. An evaluation of the major deep mine discharges is currently being conducted by the CNC under a Growing Greener Round Three Grant. Mine discharges in the lower watershed are being identified, mapped, and characterized by measuring flows and chemistry on a monthly basis over a 12-month period. Mine maps for this area are being obtained and digitized by the PaDEP into a GIS format for this project. The digitized maps will be used to display, analyze and model the minewater hydrology of the watershed. The current grant does not contain funding for the development of a restoration plan. We request a Growing Greener Round Four Grant to develop the data currently being collected into a plan that the CNC and its partners can implement.

STATEMENT OF NEED AND JUSTIFICATION OF FUNDING

Background

Chartiers Creek is a major stream in southwestern Pennsylvania that has its headwaters in Washington County, flows northward into Allegheny County, and discharges to the Ohio River in McKees Rocks (Figure 1). The stream's watershed encompasses 277 square miles that includes forest and farmland, industrial developments, abandoned minelands, urban and suburban residential communities. More than 200,000 people currently live in the watershed while well over 1,000,000 live within 25 miles of its boundaries. The watershed's industrial past and urban setting has taken its toll. Thirty years ago Chartiers Creek was heavily polluted by sewage, industrial discharges and mine drainage. Today, all of the major point source discharges of pollution have been eliminated through the construction of appropriate treatment facilities. The stream has responded favorably. Many tributaries and segments of Chartiers Creek approach the warm water fishery classification provided by DEP (Table 1). Some headwater streams in Washington County are healthy aquatic ecosystems and warm water game fish have started to return to the downstream stretches of the main stem.

Table 1. Chapter 93 classification of lower Chartiers Creek and its tributaries.

	Water Uses Protected	Exemptions
Chartiers Creek, Main Stem	WWF	none
Un-named tributaries	WWF	none
Coal Run	WWF	none
Millers Run	WWF	none
Thoms Run	TSF	none
McLaughlin Run	WWF	none
Painters Run	WWF	none
Scrubgrass Run	WWF	none
Georges Run	WWF	none
Robinson Run	WWF	none
Campbells Run	WWF	none
Whiskey Run	WWF	none
<i>WWF, warm water fishery</i>		
<i>TSF, Trout Stocking</i>		

While the quality of Chartiers Creek has improved, problems remain that limit its complete restoration. In particular, nonpoint source pollutants seriously impact the Creek. According to the Bureau of Watershed Conservation, nonpoint sources impact an estimated 11.2% of Chartiers Creek's length (Table 2). The Creek is listed as a high priority in the Bureau's inventory of watersheds degraded by nonpoint

source pollution. A principle reason for this designation is the large input of untreated mine water from abandoned underground and surface mines in the watershed. The Bureau's data indicate that mine drainage accounts for 85% of the impact from nonpoint sources of pollution in the watershed. Virtually all of the mine drainage problems are associated with abandoned underground mines in the Pittsburgh Coal bed that discharge to Chartiers Creek and its tributaries between Bridgeville and Carnegie (Coal Run, Millers Run, Thoms Run, Scrubgrass Run, Georges Run, Robinson Run, Campbells Run and Whiskey Run).

Table 2. Nonpoint Sources of Water Pollution in the Chartiers Creek Watershed.

Category	Miles Degraded	% of Total 358 Miles	Watershed Score
Agricultural	4.2	1.2%	4.5
Urban	1.5	1.3%	1.5
Mine Water	34.5	9.6%	3.5
Ground Water	-	-	1.0
Total	40.2	11.2%	10.0*

Source: Watersheds Degraded by Nonpoint Source Pollution,
PA DEP Bureau of Watershed Conservation

* Watershed with scores greater than 9.5 are considered high priority

A recent survey of Chartiers Creek by the DEP's Bureau of Water Management verified the significance of non-point sources of pollution to the creek and its tributaries. The survey's results are incorporated into the Rivers Conservation Plan. Only three small tributary streams in the lower watershed attain their designated uses. All other streams fail to attain their designated uses because of a mixture of non-point water pollution.

GOALS AND OBJECTIVES

Water Quality Information

The current CNC assessment project (Growing Greener, Round Three) is monitoring eight major mine discharge points. The monitoring locations are shown on the attached Figure 1. Flow measuring

devices are being constructed at each location. CNC as volunteers, Pitt Students and Hedin Environmental will collect water samples and measure flow on a monthly basis for twelve months. Sample analyses are being done by the PaDEP and by the University of Pittsburgh Geology Program (Dr. Rosemary Capo). The data will be used to calculate loadings for these major sources of pollution. This information is critical to plan for the restoration of the stream.

Mining Hydrology

Efforts are underway to obtain available mine maps and to digitize them into a GIS format. This is being completed by PaDEP staff specifically for this project. GAI Consultants will utilize the mapping and discharge information to analyze the abandoned mine hydrology to determine the source of pollution and whether the relocation of discharge location to a mine suitable location (for treatment) is possible.

Project Goals

The goals of this project are to utilize this new information to develop remediation recommendations.

PARTNERSHIPS

CNC will retain two consultants to prepare the restoration plan: GAI Consultants, Inc. and Hedin Environmental. GAI is currently conducting the hydrologic analysis and Hedin is managing the current discharge-monitoring program.

More detailed descriptions of the groups involved in the assessment project are presented below.

Chartiers Nature Conservancy. The Chartiers Nature Conservancy (CNC) is the leading local advocate for the restoration and management of lower Chartiers Creek. The CNC sponsored and managed the recently completed Rivers Conservation Plan. As part of this project, the CNC promoted public meetings that made local governments aware of the opportunities provided by a managed Chartiers Creek. The CNC is active in the protection of riparian zones, particularly in Carnegie – McKees Rock corridor. The CNC has become a primary voice for increased recreational use of Chartiers Creek, leading canoe trips and providing education information that highlights the remarkable natural features that exist downstream of the major inflows of AMD.

GAI Consultants, Inc. GAI is a medium-sized local (Monroeville, PA) engineering firm with broad experience in underground coal mining and mine hydrology. The company is recognized as a national leader in mine reclamation, closure and mine seal designs. .

Hedin Environmental. Hedin Environmental is small consulting firm located in Mt. Lebanon that is owned and operated by Robert Hedin. Dr. Hedin is a nationally recognized authority on mine water chemistry, characterization, and passive treatment. Dr. Hedin has been involved in water quality issues in the Watershed since 1994. Hedin Environmental has completed watershed assessments and developed stream restoration plans for several private clients.

Work Plan

Watershed Rehabilitation Plan

The water quality and hydrologic data collected during the assessment will be used to generate mine drainage treatment recommendations. Passive treatment options will be developed for major mine discharges by using established techniques (Hedin et al. 1994). Non-treatment options will be considered such as the sealing or the unsealing of mine openings, the management of inputs of water to existing mine pools, or the relocation of discharges. Non-passive treatment options, such as the combination of mine water with wastewater and the treatment at the Allegheny County Sanitary Authority Sewage plant will also be considered. Our knowledge of the watershed already indicates that “standard” passive treatment options will not be appropriate for some discharges because they occur in developed areas or immediately adjacent to the streams. The conceptual hydrologic model, developed from the mine map digitization and mine pool studies, will be used to develop alternative treatment recommendations that may include moving discharges to area more suitable for treatment.

STARTING DATE, GOALS, MILESTONES AND TASKS

Table 3 is a schedule showing major project activities and the responsible parties. GAI and Hedin will meet regularly with CNC to provide updates on project progress and provide sign-up opportunities for volunteers.

Table 3. Schedule for Chartiers Creek Watershed Evaluation.
Key to Responsible parties: Chartiers Nature Conservancy; GAI Consultants, Inc.;
Hedin Environmental.

Month	Activity	Responsible Party
July 2002	Project approval; Orientation and planning meetings	PA DEP CNC, HE, GAI HE
Oct 2002	Summarize all AMD Data	HE

Month	Activity	Responsible Party
Dec 2002	Data analysis/remediation options developed	GAI, HE
June 2003	Draft report to CNC and DEP	GAI, HE
Aug 2003	Final remediation options developed	GAI, HE
Dec 2003	Final report to DEP/CNC/Public	GAI, HE

OPERATION, MAINTENANCE AND REPLACEMENT

The operation, maintenance and replacement of any of the treatment methods recommended will be considered and discussed in the rehabilitation plan.

MEASURABLE ENVIRONMENTAL RESULTS

The PaDEP Growing Greener Round 3 funded the water sampling and mine hydrology investigation for the Lower Chartiers Watershed. This is in progress. This project will utilize this information to develop a plan to rehabilitate the watershed from abandoned mine drainage. When implemented the watershed will provide a much-improved recreational resource to the region. The Chartiers Natural Conservancy is fully committed to this goal.

ALLEGHENY COUNTY CONSERVATION DISTRICT

**LEXINGTON TECHNOLOGY PARK
BUILDING #1 – SUITE 102
400 NORTH LEXINGTON STREET
PITTSBURGH, PA 15208-2566**

PHONE: 412-241-7645 ☺ FAX: 412-242-6165

FAX TRANSMITTAL

TO: JOHN HEIN

FAX #: 412-922-4171

FROM: RICH KOWALSKI

DATE: 2/5/02

SUBJECT: Growing Greener Letter of Acknowledgment

PAGES (including cover) 2

COMMENTS:

Let Me Know if you Have
Any Questions

Rich

Lower Chartiers Creek Watershed Abandoned Mine Drainage Rehabilitation Plan

EXECUTIVE SUMMARY

Chartiers Creek is a major stream in southwestern Pennsylvania that has its headwaters in Washington County, flows northward through Allegheny County, and discharges into the Ohio River in McKees Rocks. The stream has an urban context that distinguishes it from most other streams being considered by the Commonwealth for restoration. A portion of the lower watershed lies within Pittsburgh city limits. More than 200,000 people live in the watershed. The stream has remarkable riparian features, but currently gets little recreational use because of water quality problems.

The Chartiers Nature Conservancy (CNC) completed a Rivers Conservation Plan for lower Chartiers Creek in March 2001. The number one water quality degradation parameter identified in the Plan is abandoned coalmine discharges. An evaluation of the major deep mine discharges is currently being conducted by the CNC under a Growing Greener Round Three Grant. Mine discharges in the lower watershed are being identified, mapped, and characterized by measuring flows and chemistry on a monthly basis over a 12-month period. Mine maps for this area are being obtained and digitized by the PaDEP into a GIS format for this project. The digitized maps will be used to display, analyze and model the minewater hydrology of the watershed. The current grant does not contain funding for the development of a restoration plan. We request a Growing Greener Round Four Grant to develop the data currently being collected into a plan that the CNC and its partners can implement.

Statement of Need and Justification of Funding

Background

Chartiers Creek is a major stream in southwestern Pennsylvania that has its headwaters in Washington County, flows northward into Allegheny County, and discharges to the Ohio River in McKees Rocks (Figure 1).

The stream's watershed encompasses 277 square miles that includes forest and farmland, industrial developments, abandoned minelands, urban and suburban residential communities. More than 200,000 people currently live in the watershed while well over 1,000,000 live within 25 miles of its boundaries. The watershed's industrial past and urban setting has taken its toll. Thirty years ago Chartiers Creek was heavily polluted by sewage, industrial discharges and mine drainage. Today, all of the major point source discharges of pollution have been eliminated through the construction of appropriate treatment facilities. The stream has responded favorably. Many tributaries and segments of Chartiers Creek approach the "warm water fishery" classification provided by DEP (Table 1). Some headwater streams in Washington County are healthy aquatic ecosystems and warm water game fish have started to return to the downstream stretches of the main stem.

Table 1. Chapter 93 classification of lower Chartiers Creek and its tributaries.

	Water Uses Protected	Exemptions
Chartiers Creek, Main Stem	WWF	none
Un-named tributaries	WWF	none
Coal Run	WWF	none
Millers Run	WWF	none
Thoms Run	TSF	none
McLaughlin Run	WWF	none
Painters Run	WWF	none
Scrubgrass Run	WWF	none
Georges Run	WWF	none
Robinson Run	WWF	none
Campbells Run	WWF	none
Whiskey Run	WWF	none
<i>WWF, warm water fishery</i>		
<i>TSF, Trout Stocking</i>		

While the quality of Chartiers Creek has improved, problems remain that limit its complete restoration. In particular, nonpoint source pollutants seriously impact the Creek. According to the Bureau of Watershed Conservation, nonpoint sources impact an estimated 11.2% of Chartiers Creek's length (Table 2). The Creek is listed as a high priority in the Bureau's inventory of watersheds degraded by nonpoint source pollution. A principle reason for this designation is the large input of untreated mine water from abandoned underground and surface mines in the watershed. The Bureau's data indicate that mine drainage accounts for 85% of the impact from nonpoint sources of pollution in the watershed. Virtually all of the mine drainage problems are associated with abandoned underground mines in the Pittsburgh Coal bed that discharge to Chartiers Creek and its tributaries

between Bridgeville and Carnegie (Coal Run, Millers Run, Thoms Run, Scrubgrass Run, Georges Run, Robinson Run, Campbells Run and Whiskey Run).

Table 2. Nonpoint Sources of Water Pollution in the Chartiers Creek Watershed.

Category	Miles	Miles Degraded Watershed	Score	% of Total 358
Agricultural	4.2	1.2%	4.5	
Urban	1.5	1.3%	1.5	
Mine Water	34.5	9.6%	3.5	
Ground Water	-	-	1.0	
Total	40.2	11.2%	10.0*	

Source: Watersheds Degraded by Nonpoint Source Pollution,
PA DEP Bureau of Watershed Conservation

* Watershed with scores greater than 9.5 are considered high priority

A recent survey of Chartiers Creek by the DEP's Bureau of Water Management verified the significance of non-point sources of pollution to the creek and its tributaries. The survey's results are incorporated into the Rivers Conservation Plan. Only three small tributary streams in the lower watershed attain their designated uses. All other streams fail to attain their designated uses because of a mixture of non-point water pollution.

GOALS AND OBJECTIVES

Water Quality Information

The current CNC assessment project (Growing Greener, Round Three) is monitoring eight major mine discharge points. The monitoring locations are shown on the attached Figure 1. Flow measuring devices are being constructed at each location. CNC as volunteers, Pitt Students and Hedin Environmental will collect water samples and measure flow on a monthly basis for twelve months. Sample analyses are being done by the PaDEP and by the University of Pittsburgh Geology Program (Dr. Rosemary Capo). The data will be used to calculate loadings for these major sources of pollution. This information is critical to plan for the restoration of the stream.

Mining Hydrology

Efforts are underway to obtain available mine maps and to digitize them into a GIS format. This is being

completed by PaDEP staff specifically for this project. GAI Consultants will utilize the mapping and discharge information to analyze the abandoned mine hydrology to determine the source of pollution and whether the relocation of discharge location to a mine suitable location (for treatment) is possible.

Project Goals

The goals of this project are to utilize this new information to develop remediation recommendations.

Partnerships

CNC will retain two consultants to prepare the restoration plan: GAI Consultants, Inc. and Hedin Environmental. GAI is currently conducting the hydrologic analysis and Hedin is managing the current discharge-monitoring program.

More detailed descriptions of the groups involved in the assessment project are presented below.

Chartiers Nature Conservancy. The Chartiers Nature Conservancy (CNC) is the leading local advocate for the restoration and management of lower Chartiers Creek. The CNC sponsored and managed the recently completed Rivers Conservation Plan. As part of this project, the CNC promoted public meetings that made local governments aware of the opportunities provided by a managed Chartiers Creek. The CNC is active in the protection of riparian zones, particularly in Carnegie - McKees Rock corridor. The CNC has become a primary voice for increased recreational use of Chartiers Creek, leading canoe trips and providing education information that highlights the remarkable natural features that exist downstream of the major inflows of AMD.

GAI Consultants, Inc. GAI is a medium-sized local (Monroeville, PA) engineering firm with broad experience in underground coal mining and mine hydrology. The company is recognized as a national leader in mine reclamation, closure and mine seal designs.

Hedin Environmental. Hedin Environmental is small consulting firm located in Mt. Lebanon that is owned and operated by Robert Hedin. Dr. Hedin is a nationally recognized authority on mine water chemistry, characterization, and passive treatment. Dr. Hedin has been involved in water quality issues in the Watershed since 1994. Hedin Environmental has completed watershed assessments and developed stream restoration plans for several private clients.

Work Plan

Watershed Rehabilitation Plan

The water quality and hydrologic data collected during the assessment will be used to generate mine drainage treatment recommendations. Passive treatment options will be developed for major mine discharges by using established techniques (Hedin et al. 1994). Non-treatment options will be considered such as the sealing or the unsealing of mine openings, the management of inputs of water to existing mine pools, or the relocation of discharges. Non-passive treatment options, such as the combination of mine water with wastewater and the treatment at the Allegheny County Sanitary Authority Sewage plant will also be considered. Our knowledge of the watershed already indicates that "standard" passive treatment options will not be appropriate for some discharges because they occur in developed areas or immediately adjacent to the streams. The conceptual hydrologic model, developed from the mine map digitization and mine pool studies, will be used to develop alternative treatment recommendations that may include moving discharges to area more suitable for treatment.

Starting Date, Goals, Milestones and Tasks

Table 3 is a schedule showing major project activities and the responsible parties. GAI and Hedin will meet regularly with CNC to provide updates on project progress and provide sign-up opportunities for volunteers.

Table 3. Schedule for Chartiers Creek Watershed Evaluation.

**Key to Responsible parties: Chartiers Nature Conservancy; GAI Consultants, Inc.;
Hedin Environmental.**

Month	Activity	Responsible Party	
July 2002	Project approval; Orientation and planning meetings		PA DEP
CNC, HE, GAI HE			
Oct 2002	Summarize all AMD Data	HE	
Dec 2002	Data analysis/remediation options developed	GAI, HE	
June 2003	Draft report to CNC and DEP	GAI, HE	
Aug 2003	Final remediation options developed	GAI, HE	
Dec 2003	Final report to DEP/CNC/Public	GAI, HE	

Operation, Maintenance and Replacement

The operation, maintenance and replacement of any of the treatment methods recommended will be

considered and discussed in the rehabilitation plan.

MEASURABLE ENVIRONMENTAL RESULTS

The PaDEP Growing Greener Round 3 funded the water sampling and mine hydrology investigation for the Lower Chartiers Watershed. This is in progress. This project will utilize this information to develop a plan to rehabilitate the watershed from abandoned mine drainage. When implemented the watershed will provide a much-improved recreational resource to the region. The Chartiers Natural Conservancy is fully committed to this goal.

DEP Growing Greener Budget Worksheet

This worksheet should be used to prepare Item #11 on the Application, Budget Summary, and must be submitted with the application package.

Totals for each category should be entered on the application form.

1. SPONSOR SALARIES/BENEFITS

INDIVIDUAL NA	POSITION	HOURLY RATE	HOURS	BENEFITS	TOTAL COST
TOTAL SALARIES/BENEFITS					

2. TRAVEL NA

Mileage: _____ miles @ \$_____/mile = _____ Meals: _____ = _____ Lodging: _____ nights @ \$_____/night = _____ <p style="text-align: center;">TOTAL TRAVEL = _____</p>	Ensure that maximum reimbursement are not exceeded. Rates can be found at www.dep.state.pa.us/growgreen/travel.htm .
--	--

3. EQUIPMENT and SUPPLIES

ITEM	QUANTITY	COST PER ITEM	TOTAL COST
NA			
TOTAL EQUIPMENT & SUPPLIES			

4. ADMINISTRATIVE (2% maximum)

ITEM	COST
Administrative Expense	730
TOTAL ADMINISTRATIVE	

5. CONTRACTUAL

A. CONTRACTOR SALARIES

DELIVERABLE	CONTRACTOR	HOURLY RATE	HOURS	BENEFITS	CONTRACTOR SALARY
Abandoned Mine Drainage Rehabilitation Plan	GAI Consultants Inc	\$1.22	245		19,900
	Hedin Environmental	69.74	228		15,900
TOTAL CONTRACTOR SALARIES					\$ 35,800

B. OTHER CONTRACTUAL EXPENSES --None

ITEM	COST
Water Sample Analysis	
Permitting Application Fees	
TOTAL OTHER CONTRACTUAL EXPENSES	0

C. TOTAL CONTRACTUAL (= A+B)

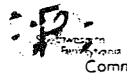
CONTRACTOR SALARIES	OTHER CONTRACTUAL EXPENSES	TOTAL CONTRACTUAL
\$ 35,800	0	\$ 35,800

6. CONSTRUCTION -- NA

ITEM	COST
Materials:	
TOTAL CONSTRUCTION	0

7. OTHER --NA

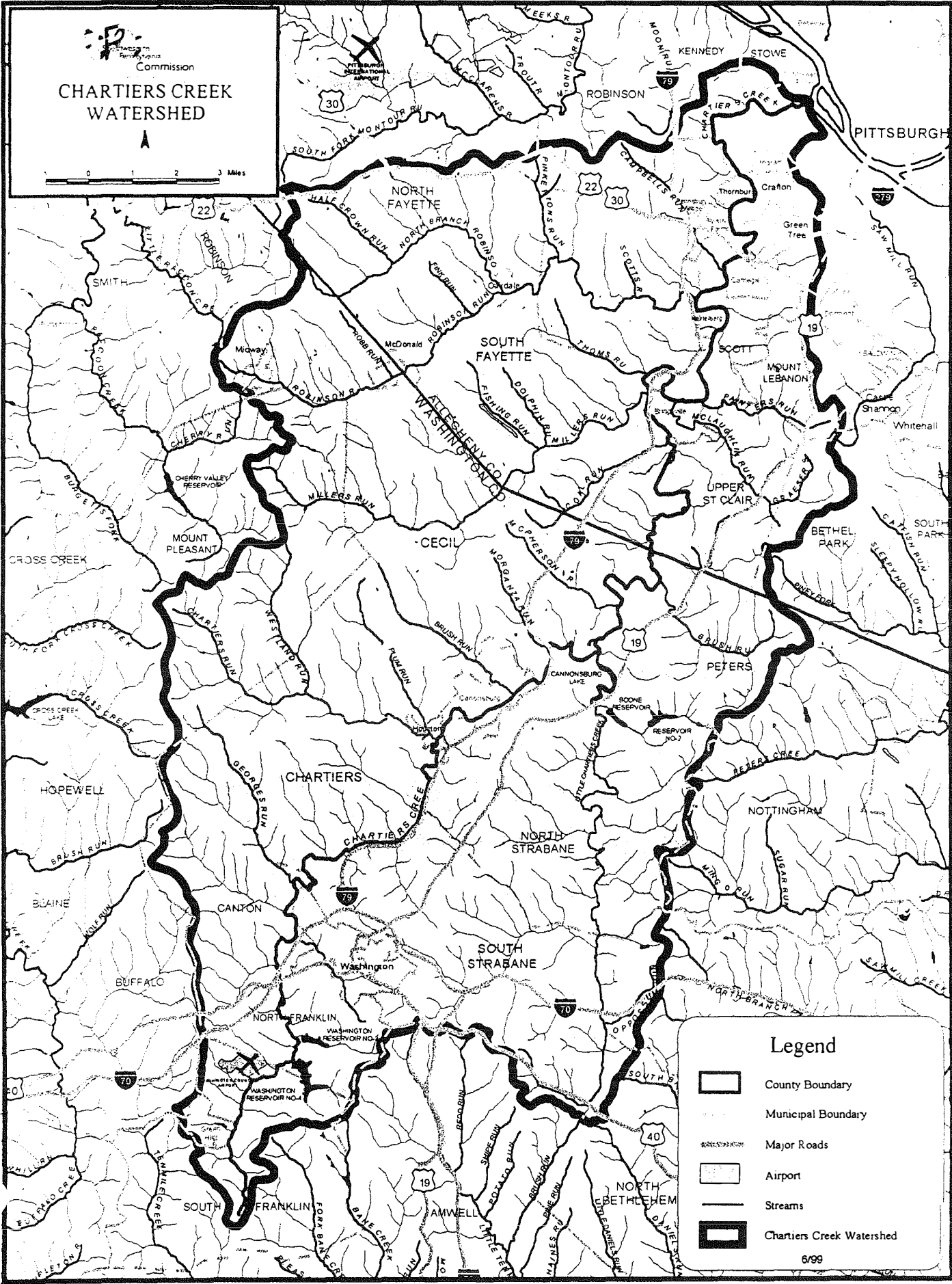
ITEM	COST
TOTAL OTHER	0









CHARTIERS CREEK WATERSHED



0 1 2 3 Miles



Legend

-  County Boundary
-  Municipal Boundary
-  Major Roads
-  Airport
-  Streams
-  Charters Creek Watershed

CHARTIERS CREEK WATERSHED

FACT SHEET

Chartiers Creek is a major stream in Western Pennsylvania. It has its headwaters in Washington county, flows northward through Allegheny county and discharges into the Ohio River in McKees Rocks.

The lower portion of the Creek lies within the boundaries of the City of Pittsburgh.

The stream's watershed encompasses 276 square miles that includes forest, farmland, industrial development and abandoned minelands as well as urban and suburban residential communities.

The Chartiers Creek Watershed contains a total of 358 miles of streams.

Over 200,000 people live within the watershed and over 1,000,000 live within 25 miles of its boundaries.

There are over 27 municipalities within the watershed in Allegheny county alone.

The stream was very polluted 30 years ago with industrial and mine drainage and sewage. There has been much improvement with ALCOSAN and municipalities working together.

There remains much work to be done. Chartiers Creek, according to the Bureau of Land and Water Conservation, is a high priority in the Bureau's inventory of watersheds degraded by nonpoint source pollution. The major source of pollution in Allegheny county is abandoned mine drainage while in Washington county it is agricultural runoff and sewage.

There are at least 43 major and 250 minor sources of mine drainage pollution in the watershed.

The largest tributaries in the Chartiers Creek Watershed are:

Little Chartiers Creek Washington County :

Millers Run Allegheny and Washington Counties

Robinson Run/North Branch Robinson Run Allegheny and Washington Counties

Brush Run Allegheny and Washington Counties

Georges Run Washington County

Mclaughlin Run Allegheny County

Further Information on the Chartiers Creek Watershed can be obtained from:

www.washjeff.edu/Chartiers, [www.Chartiers Creek.Org](http://www.ChartiersCreek.Org), [www.Chartiers Creek.Net](http://www.ChartiersCreek.Net)

or by contacting Chartiers Creek Watershed Coalition

760 Robinwood Dr.Pgh, PA 15220 412-563-3144



Allegheny County Conservation District

Lexington Technology Park, Building 1, Ste. 102 - 400 North Lexington Street - Pittsburgh, PA 15206-2566
Phone (412) 241-7645 Fax (412) 242-6165

February 5, 2002


Michael Sherman
Department of Environmental Protection
Growing Greener Grants Center
9th Floor - Rachel Carson State Office Building
400 Market Street
P. O. Box 8776
Harrisburg, PA 17105-8776

Dear Mr. Sherman:

This letter acknowledges that the Allegheny County Conservation District is aware that the Chartiers Creek Nature Conservancy plans to submit an application for a Growing Greener Grant for the Lower Chartiers Creek Watershed Abandoned Mine Drainage Rehabilitation Project.

Thank you for informing us of your proposal.

Very truly yours,


Robert S. Hester, Chairman
Board of Directors

RSB djs



WESTERN PENNSYLVANIA COALITION FOR ABANDONED MINE RECLAMATION

Donohoe Center, R.D. #12, Box 202-B, Greensburg, PA 15601 • Phone (724) 837-5271 • FAX (724) 837-4127

email: wpcamr@westpa.com

John Hamm
Charmers Nature Conservancy
PO Box 44221
Crafton, PA 15205

REF: Letter of Support

Dear John

Thank you for informing us of the Lower Charmers Creek Watershed AMD Rehabilitation Plan you have proposed for Growing Greener funds in the Charmers Creek watershed. The WPCAMR would like to offer its support for this plan. We believe that in order to fully understand the problems affecting a watershed, a detailed plan must be completed. This is especially true in watersheds impacted by abandoned mine drainage.

In order for us to become more familiar with your proposed project, we would like a copy of your application form, scope of work and a location map. Once the application is completed and submitted to the DEP, we are requesting that you send us a copy of your work plan including budget information for our files.

In addition, because WPCAMR has been involved in assessing AMD problems, we would be willing to offer limited technical support to your project. You may reach us at (724) 837-5271. Good luck with your proposal!

Sincerely,

Bruce Golden
Regional Coordinator
wpcamr@westpa.com

Deb Simko
Watershed Coordinator
debsimko@vahoo.com