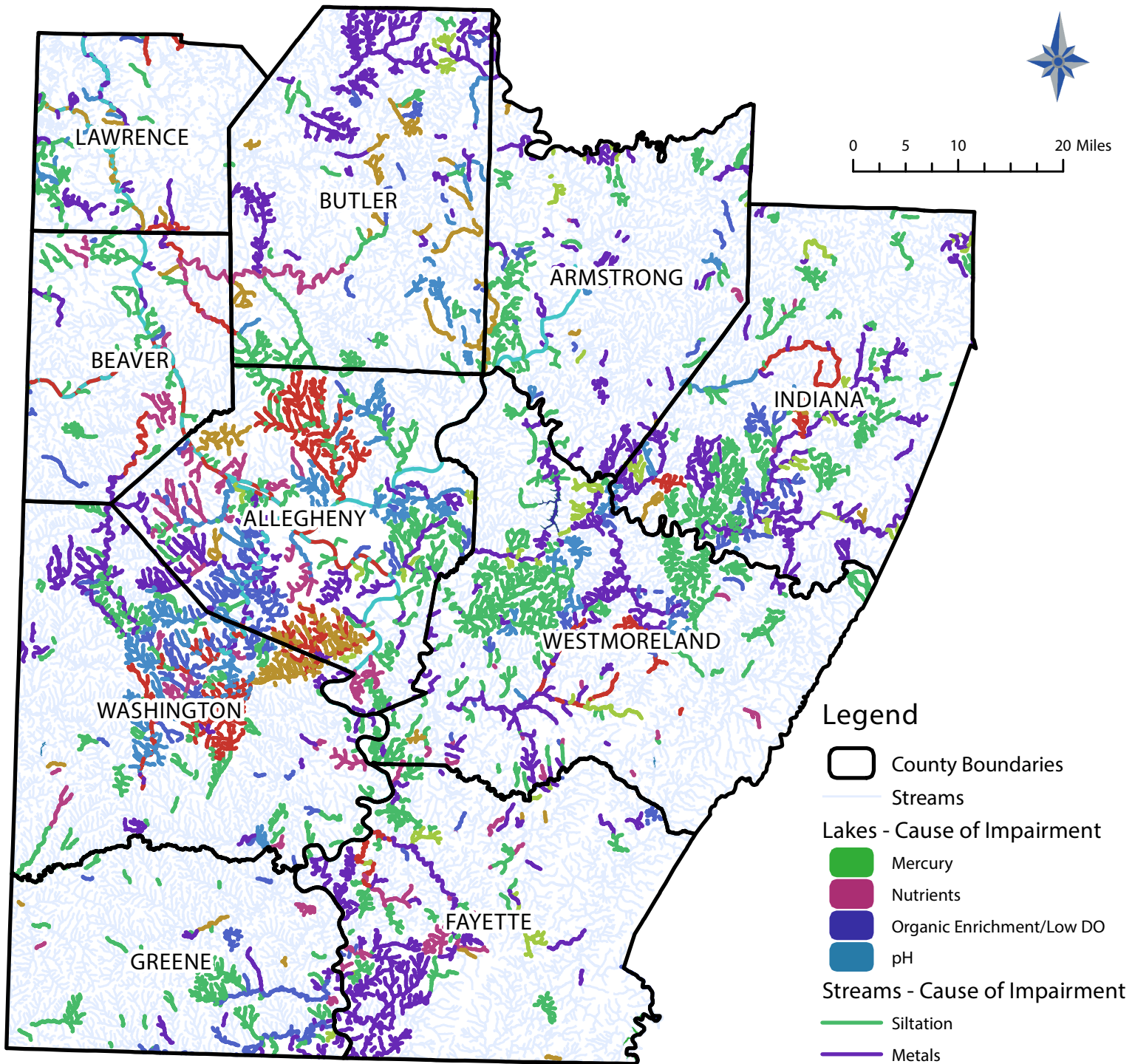


Impaired Waterways in the SPC Region

Data Source: PA Department of Environmental Protection, 2020



*The following causes of impairments include less than 300 stream segments and were therefore grouped together for the purposes of mapping:

Other hydromodification, total dissolved solids, toxicity, flow regime modification, total suspended solids, mercury, osmotic pressure, habitat alterations, thermal modification, turbidity, algae, organics, sulfate, chlorine, dewatering, and oil/grease.