

# THE BEAUTIFUL BLACKWATER WATERSHED

## STATE OF THE RIVER REPORT I



September 2014

© Kent Mason

Produced by: Friends of Blackwater  
571 Douglas Road/PO Box 247  
Thomas, WV 26292



# Contents

OVERVIEW	3
HISTORIC BLACKWATER: PIONEERS, EXPLORERS, EARLY INDUSTRY, RAILROADS AND RESTORATION	5
POLLUTION PROBLEMS IN THE BLACKWATER	7
<i>TABLE: AVERAGE pH FOR AREAS OF THE BLACKWATER WATERSHED</i>	7
MAP OF ABANDONED MINE LANDS PROJECTS	8
PAST AND FUTURE TREATMENT	10
STATE INVESTMENT IN THE RIVER	10
<i>TABLE: AML PROJECTS BY WVDEP</i>	10
THE BLACKWATER WATERSHED ... A TOURISM MECCA	11
MAP OF BLACKWATER WATERSHED	12
PUBLIC LANDS THE RIVER FLOWS THROUGH	14
FRIENDS OF BLACKWATER	16
OUR RECOMMENDATIONS AND GOALS FOR THE RIVER	17
SUPPORT FOR OUR WORK	18
<i>BUSINESS</i>	18
<i>NONPROFITS</i>	18
<i>GOVERNMENT AGENCIES</i>	18
<i>FUNDERS</i>	18
<i>OUR AMERICORPS VISTAS</i>	18
GOVERNMENT AGENCIES WHO WORK ON WATER QUALITY	19

## Photo Credits:

Kent Mason  
Steve Shaluta  
Ludovic Moore  
Kathryn Davis  
Lon Marshall  
Dave Watson

## OVERVIEW

The high elevation Blackwater River flows through the Allegheny Mountains of Tucker County West Virginia. It is a principal tributary of the Cheat River which flows north to the Monongahela forming the Ohio at Pittsburgh. The name "Blackwater" originated from the reddish-brown hue of the River caused by tannic acid from evergreens growing along the river's banks and iron oxide from the Mauch Chunk shales underlying a large part of Canaan Valley where the river's main stem originates. At 3,250 feet the headwaters of the Blackwater River in the Valley wetlands, are placid -- compared to the raging river's tumultuous descent through the Blackwater Canyon below Blackwater Falls. Within the Canyon the river drops 1,500 feet over 10 miles. The Blackwater River is 31 miles long and drains an area of 142 square miles.



*The Blackwater River slowly meanders through Canaan Valley*



*The North Fork of the Blackwater River*

The principal tributaries of the Blackwater River starting at the mouth are Big and Tub Runs, the North Fork running through Thomas, (Long, Middle, and Snyder enter here) Pendleton which forms the lake at Blackwater Falls State Park, Beaver and Devil's Run (just above Davis), Yellow Creek, Little Blackwater River, North Branch, Sand, Yoakum, Freeland, Club, and Mill Runs in Canaan Valley. In Blackwater Falls State Park the tributaries are Tank, Engine, Shays and Lindy Run which run down the north-facing slope of the Blackwater Canyon.



*Map courtesy of Evan Fedorko, GISP  
WV GIS Technical Center, WVU*



## **FLORA AND FAUNA OF THE LAND OF BLACKWATER**

Northern plant life meets southern in the Blackwater watershed. The sourwood, a southern tree, grows on the mountain rim, just a few miles from a patch of cottongrass, a bog-loving plant found far into the Arctic. The high elevation of this area provides a cool refuge for plants and animals left over from the Ice Age. The Blackwater forest ecosystem is similar to northern Quebec. Red spruce and balsam fir, false hellebore and dwarf cornel are examples as well as the northern water shrew, the West Virginia northern flying squirrel, the snowshoe hare, the Cheat Mountain salamander and the chatty little Red Squirrel, also called a “fairydiddle”. Native brook trout shelter in the headwater streams in Canaan Valley.



*West Virginia Northern Flying Squirrel*



*False Hellebore by Kent Mason*



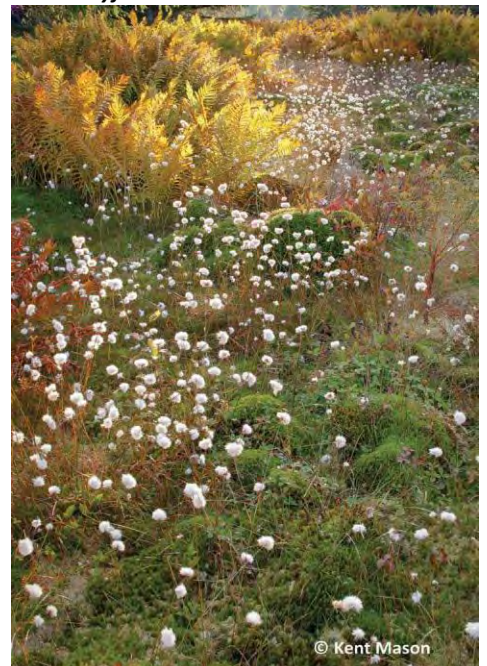
*Brook Trout*



*Crayfish*



*Black Bear*



*Cotton grass grows in Canaan Valley*



## HISTORIC BLACKWATER: PIONEERS, EXPLORERS, EARLY INDUSTRY, RAILROADS AND RESTORATION



*The Great Falls of Blackwater by Porte Crayon*



*Fate of the Fancy Rods by Porte Crayon*



**Henry Gassaway Davis**

*"I love the Blackwater river to walk along and watch the herons fish – to sit beside and listen to the sounds. I love the peace and serenity just being near the river and in the woods. I love watching the changes; fast and slow, high after rains and low in the late summer and all the variations. I like to image the water flowing to Parsons, then on into the Cheat and Mon and the Ohio and Mississippi and into the Gulf. Where does it go from there? It stirs my imagination"*

*- Lori Haldeman, FOB Staff and local artisan*





and cut stone archways can still be seen along the Blackwater Canyon Trail from Thomas to Hendricks. The cemetery and school foundation from the railroad/river town of Lime Rock are also along the trail.

Thomas and Davis were boom towns attracting thousands of immigrants looking for work. Fourteen nationalities including Lithuanians, Croatians, Italians, Swedes, Slovaks, Germans, Poles, Russians, and Swiss moved to the area. Jewish and African American families were part of the mix. The nationally famous legal case that created equal schooling in West Virginia in 1897 was brought by African American Carrie Williams, teacher at the Coketon Colored School along the North Fork. (See Historic Markers in Parsons and at the Buxton Landstreet Building along the Douglas Road). Coal and coke defined Thomas and logging Davis. Timber was cut for sawmills, tanneries and a pulp mill at Davis and Parsons and by 1917 most of the valuable timber was gone. The removal of the forest cover led to flooding downstream all the way to Pittsburgh. This caused the creation of the Monongahela National Forest, a federal forest restoration project.



*J.R. Clifford*



*Students at the Lime Rock School circa 1915*



*Passengers board the train in Thomas, WV*



*Big Run Arch under the Blackwater Canyon Railroad Grade*

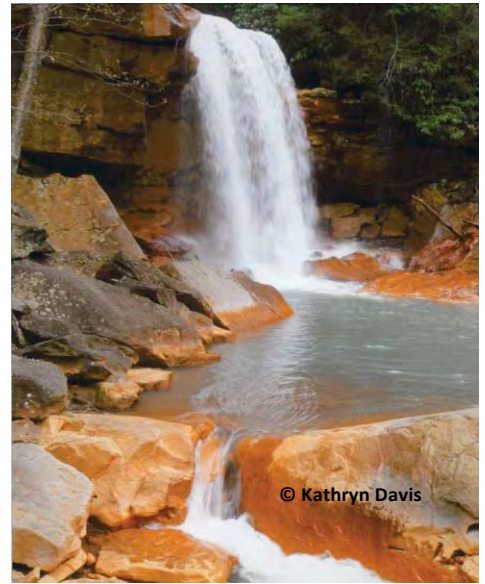


*"I love the Blackwater because I fish eleven months out of the year and I like to kayak it too"*  
*- Tommy Ashton, Friends of Blackwater Volunteer and Davis Resident*

## POLLUTION PROBLEMS IN THE BLACKWATER

For over 100 years the Blackwater River has suffered from several water impurities throughout its tributaries - but mainly from acid mine drainage (AMD). Below is a chart outlining the water pollution from historic mining in Blackwater River tributaries.

AMD is the outflow of acidic water from abandoned mines into a body of water. It takes oxygen, and water flowing over pyrite associated with coal seams to create AMD. Much of the river is affected by acid mine drainage but in particular the tributaries of Tub Run in the Canyon, Finley and Long Run on the North Fork and the mine portal near Douglas and Yellow Creek on the main stem. More resources should be focused on the North Fork of the Blackwater which is the main source of AMD pollution in the river today.



*The rocks below Douglas Falls along the North Fork of the Blackwater are stained orange due to iron precipitation caused by AMD.*

Acid rain is air pollution from power plants in the Ohio River Valley. Tucker County gets high levels of rain fall and the acid in the rain has a negative impact on Tucker County streams. Little buffering capacity due to fire and logging. These streams need treatment too. Tank, Engine, Shays and Lindy flowing through the BFSP and Big Run near the High School.

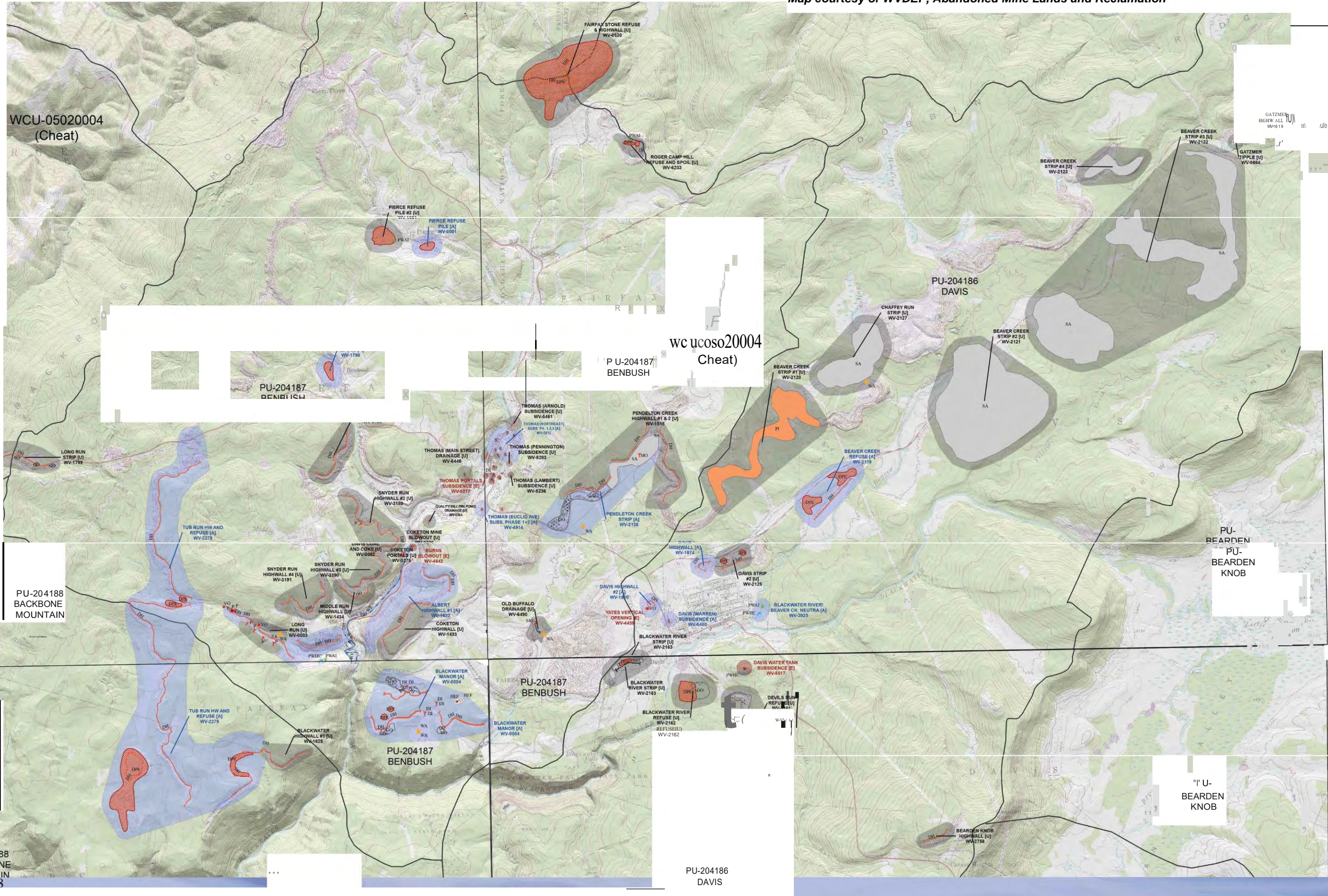
Friends of Blackwater's water monitoring project takes monthly sample of water quality on Blackwater tributaries. The severity of the AMD impact can be measured by the pH level of the water. A normal range for pH is 6.5 to 8.5 on a pH meter. Too high is too alkaline and below six is too acidic for aquatic life. Streams impacted by AMD in the watershed are often at a pH of 4 or lower. See the chart below for average pH's in the watershed.

<b>TABLE: AVERAGE pH FOR AREAS OF THE BLACKWATER WATERSHED</b>					
Site Name	Avg. pH	Site Name	Avg. pH	Site Name	Avg. pH
North Fork Above Dam	7.11	End of WALD	3.30	Sand Run of North Fork	4.97
North Fork below Dam	6.90	Middle Run above WALD Discharge	6.19	Shays Run	3.55
Aluminum Run	6.61	Middle Run Below WALD Discharge	4.08	Tank Run	3.47
North Fork at Railroad Trestle	7.23	NorthFork below Middle Run	4.92	Wimer Run	7.92
Snyder Run	7.00	North Fork Above Long Run	5.96	Beaver Creek	6.44
North Fork below Snyder Run	7.41	Long Run	3.36	Yellow Creek	4.22
North Fork Above Burns Blowout	6.68	North Fork below Long Run	4.12	Finley Run	3.47
Burns Blowout	3.11	North Fork above Douglas Falls	4.19	Tub Run	5.61
North Fork above Mine Portal 29	6.25	Big Run	3.73	Yoakum Run	8.04
Mine Portal 29 -combined	3.42	Devils Run	6.47	Freeland Run	7.92
Mine portal 29 - Entering WALD	3.39	Lindy Run	3.59		
North Fork below Mine Portal 29	5.79	Engine Run	3.58		



# MAP OF ABANDONED MINE LANDS PROJECTS

Map courtesy of WVDEP, Abandoned Mine Lands and Reclamation




- Legend**
- CJ** Planning Units
- point features**
- Problem Key**
- DangerousImpoundment
  - Equipment/Facilities
  - Hazardous Equipment/Facilities
  - Gases: Hazardous/E, positive
  - Hazardous Water Body
  - Polluted Water: Agriculture & Industrial
  - Polluted Water: Human Consumption
  - Portal: Mine Openings
  - Vertical Opening
  - Water Problems
- line features**
- Problem Key**
- Clogged Stream\_miles
  - DangerousHighwalls\_n
  - Highwall\_n
  - Water Extension Lines
- polygon features**
- Other
- Problem Key**
- Bench
  - Clogged Stream Lands
  - Dangerous Piles and Embankments
  - Dangerous Sides
  - Gob
  - Haul Road
  - Industrial/Residential Waste
  - Dangerous Pits
  - Pits
  - Slump
  - Slurry
  - Spill Area
  - Subsidence
  - Surface Burning
  - Underground Mine File
- Problem Area (Status)**
- Abated
  - Emergency
  - Unabated

Coordinate System: NAD 1983 UTM Zone 17N  
 Projection: TransverseMercator  
 Datum: North American 1983  
 False Easting: 500,000.0000  
 False Northing: 0.0000  
 Central Meridian: -81.0000  
 Scale Factor: 0.9996  
 Latitude Of Origin: 0.0000  
 Units: Meter

0.5 Miles

0.25

Date: 6/18/2014

N

**cJep A**



## **PAST AND FUTURE TREATMENT**

There have been recent efforts to clean the river and reverse the effects of AMD on the river. One milestone in water treatment was the Blackwater River Limestone Drum Station. A rotary drum system was used with six water powered cylinders grinding limestone aggregate into a slurry provided the main source of treatment. As the river's flow changes the drums automatically adjust their slurry output. The limestone raises the pH of the water to normal levels so fish can survive.

The new treatment at Davis is a doser which is operated by computer. The doser is activated when the pH as measured at the gauging station on the River at Davis drops too low. The doser creates a limestone slurry that enters the River above the mouth of Beaver Creek. As the slurred calcium carbonate limestone enters the River and dissolves it provides alkalinity to neutralize acid water. These treatment systems were originally put in place to treat AMD from Beaver Creek. However recent reading of pH on Beaver Creek show improvement. In our opinion this treatment system could be better used on the North Fork.

Land reclamation has played an important role in reducing water pollution by covering up mineral soils, old gob piles and stopping infiltration of water into old mine tunnels but it is not enough. This has been the main focus of the Abandoned Mine Lands program of the DEP. See Chart and map on pages 8 and 9.

### **STATE INVESTMENT IN THE RIVER**

<b>TABLE: AML PROJECTS BY WVDEP</b>				
<b>Project Name</b>	<b>PAD #</b>	<b>Status</b>	<b>Completed</b>	<b>Cost</b>
Davis Highwall	WV-1674	Abated	1991	\$153,415.00
Davis Highwall #2	WV-1620	Abated	1991	\$151,999.00
Davis Strip #2	WV-2125	Abated	1991	
Benbush Refuse Pile	WV-1798	Abated	1992	\$214,451.00
Blackwater River/ Beaver Creek	WV-3925	Abated	1993	\$1,757,629.45
Burns Blowout	WV-4642	Abated	1994	\$12,619.00
Pierce Refuse Pile	WV-0001	Abated	1994	\$198,596.00
Albert Highwall #1	WV-1622	Abated	1996	\$3,650,807.97
Beaver Creek Refuse	WV-2119	Abated	1996	\$86,816.52
Douglas Run Highwall #1	WV-1623	Abated	1996	\$1,446,449.00
Long Run	WV-0003	Abated	1996	
Blackwater Manor	WV-0004	Abated	1997	\$283,929.00
Albert Highwall Enhancement A		Abated	2007	\$187,974.40
Pendleton Creek Highwall	WV-1515	Abated	2010	
Pendleton Creek Strip Phase I	WV-2128	Abated	2010	\$763,450.00
Thomas (Sunrise Sanitation) Blowout	WV-5937	Abated	2010	\$549,832.00
Long Run Highwall #1	WV-3187	Abated	2011	
Pierce Refuse Pile #2	WV-1801	Abated		
Tub Run Highwall & Refuse Phase I	WV-2279	Abated		
Tub Run Highwall & Refuse Phase II	WV-2279	In Construction		
Albert Highwall #1 Phase II	WV-1622	In Design		
Chaffey Run Strip	WV-2127	In Design		
Pendleton Creek Strip Phase II	WV-2128	In Design		
Roger Camp Hill Refuse	WV-6233	In Design		
<b>Total Expenses Reported To Date:</b>				<b>\$9,457,968.34</b>



## **THE BLACKWATER WATERSHED ... A TOURISM MECCA**

The Blackwater Watershed is an outdoor recreation paradise. From skiing and snowboarding in Canaan Valley to hiking and mountain biking on the Monongahela National Forest and Blackwater Falls State Park!

River sports include canoeing and kayaking, fishing and bird watching. Heritage tourism sites are available in Thomas where the main street overlooking the river is a National Register site and the coke ovens of Davis Coal and Coke still stand along the old railroad grade downstream from Thomas. Visit the restored Buxton Landstreet Building an old company store, now an art gallery on your way and view the preserved Davis Coal and Coke Engineering Building.

Nature walks in the Canaan Valley National Wildlife Refuge are led by staff and local experts. The annual Birding Festival is held at Canaan Valley Resort State Park. The area is famous for gnarly mountain bike races like the Blackwater Classic and the Revenge of the Rattlesnake put on by the West Virginia Mountain Biking Association. The "Run for It" charity race put on by the Tucker Community Foundation is another great outdoor event in Davis in September. Great restaurants in Thomas, Davis and the Valley welcome outdoor enthusiasts and art galleries and specialty shops along the river are fun to explore.



*Coke ovens along the Blackwater Canyon Trail*



*The historic Buxton Landstreet Building in Coketon, WV*



*Bird banding station.*



*The view of the river below along the Blackwater Canyon Trail.*



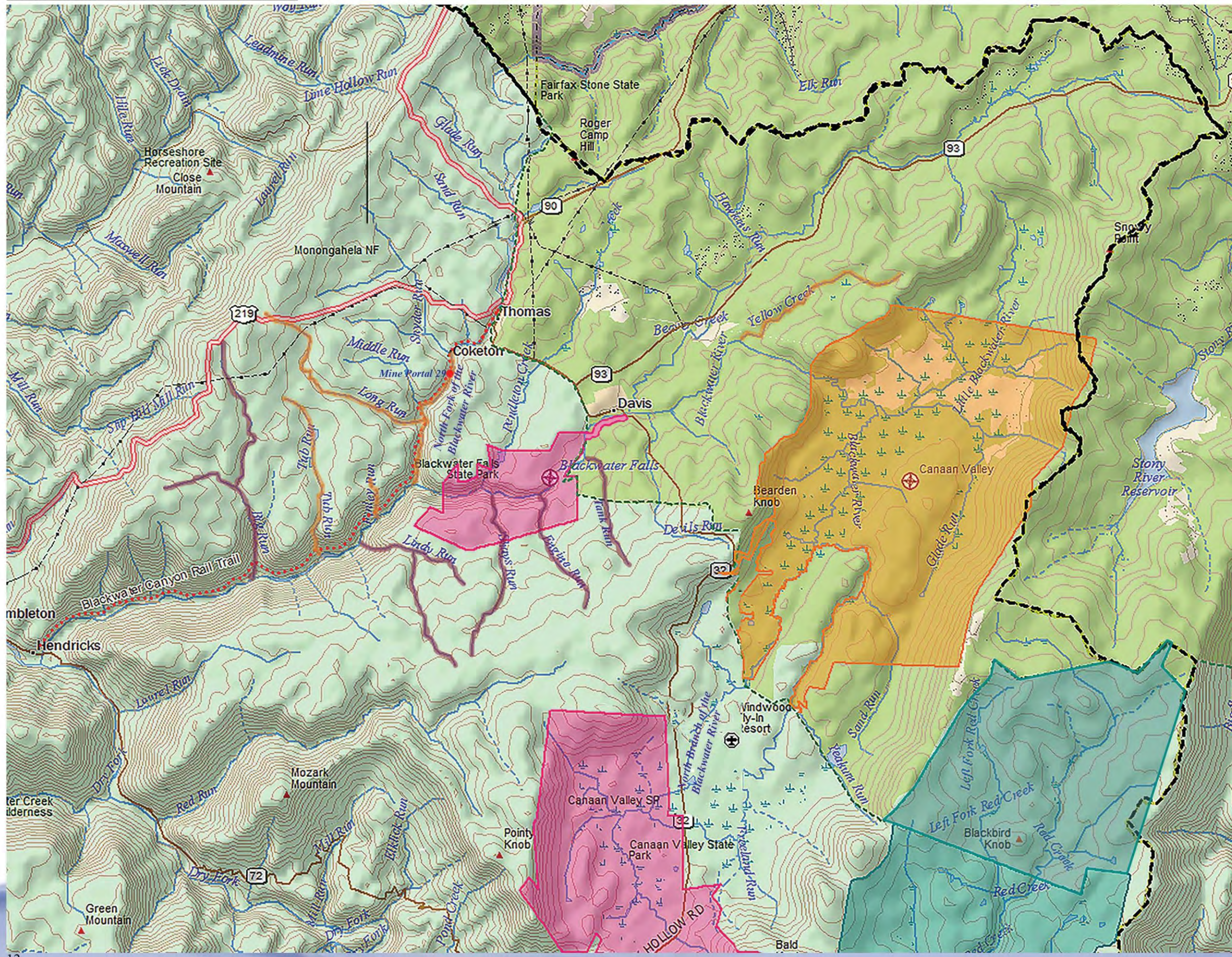
*Cross-country skiing is a favorite winter pastime.*




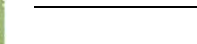






*The Blackwater provides Class V+ rapids and draws the most experienced kayakers.*

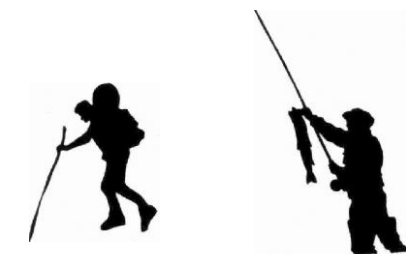


**MAP OF BLACKWATER WATERSHED**



-  Streams Impacted by Acid Mine Drainage
-  Streams Impacted by Acid Rain
-  County Boundary
-  Blackwater Canyon Rail Trail
-  Monongahela National Forest Proclamation Boundary

-  State Park Lands
-  Canaan Valley NWR
-  Dolly Sods Wilderness Area





## PUBLIC LANDS THE RIVER FLOWS THROUGH

The Blackwater River flows through public lands during its winding journey. These lands include Canaan Valley State Park, the Canaan Valley National Wildlife Refuge, Blackwater Falls State Park, Little Canaan Wildlife Management Area and the Monongahela National Forest and the Thomas and Davis City Parks.

**Canaan Valley State Park**, located in the highest valley east of the Mississippi River and contains part of the second-largest inland wetland area in the United States. The Park is the source of the southern-most headwaters of the Blackwater River. Sarah Maude Thompson Kaemmerling granted 3,149 acres to the state in the 1950s for the formation of a state park dedicated to preserving nature with the stipulation that the state match the gift with another 3,000-acres which they did. In 1971 the Canaan Valley Resort State Park was established centering on the ski slopes at the southern end of the Valley. Other skiing opportunities are at Timberline Resort and Whitegrass Cross Country Touring Center.

**Canaan Valley National Wildlife Refuge** was established in 1994 with the assistance from the Conservation Fund. It is one of the largest and most diverse freshwater wetland areas in central and southern Appalachia. More than 580 plant species and at least 290 species of vertebrates are known to exist in the Canaan area including the endangered Virginia northern flying squirrel and the Cheat Mountain salamander. The refuge's goal is to preserve 24,000 acres of fragile wetlands and unique habitats of the upper Blackwater River.



*Camping in Canaan Valley, WV.*



*Entrance to the Little Canaan WMA.*



*Sunrise over a pond at the Canaan Valley National Wildlife Refuge.*



**The Little Canaan Wildlife Management Area** further protects the Blackwater River upstream of the town of Davis. Hunting and fishing are popular on this recently acquired 3,168 acre tract of land. The property is assessable along Camp 70 Road going out of Davis near the mouth of Beaver Creek.



*The iconic Blackwater Falls.*

**Blackwater Falls State Park** is downstream. The centerpiece of the 2,456 acre Park is Blackwater Falls, the most photographed scenic area in West Virginia. Equally stunning is the view from its beautiful Lodge overlooking the Blackwater River Gorge. The Park is located just southeast of Davis. It protects 2,358 acres of red spruce and eastern hemlock upland forest. The Park was formally established in 1937, with several land donations added since. In 2000 under Governor Cecil Underwood added 150 acres to the State Park. In 2002 Governor Bob Wise bought 500 acres along the river upstream of the Falls from Allegheny Power for the State Park connecting it to the town of Davis along the River Trail.

**The Monongahela National Forest (The Mon)** was established by Congress in 1915 as the then 7,200



*The Monongahela National Forest.*

acre “Monongahela Purchase”. It became a U.S. National Forest on April 28, 1920. It now encompasses 910,155 acres. In Tucker County the Mon wraps around Blackwater Falls State Park on Canaan Mountain and along the Canaan Loop Road, famous for camping, hiking, mountain biking and bear hunting. Iconic Dolly Sods is a high plateau above the Blackwater River with flag trees, huckleberry plains and fantastic views. Spring and fall the Brooks Bird Club tags migrating birds here at the Allegheny Front Migratory Bird Observatory near the Red Creek Campground. Other high points are the Olsen Fire Tower and Bog on the North Side of the Blackwater Canyon.

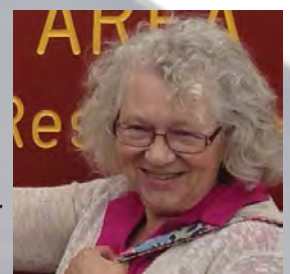


*A foggy morning on Dolly Sods.*

© Kent Mason

*“The wild Blackwater River threads it way through the reeds and sedges of the Canaan Valley wetlands, glides through the high mountain town of Davis before carving its boulder strewn whitewater pathway through Blackwater Canyon! Spectacular! “*

*-Judy Rodd, Friends of Blackwater Executive Director*





## **FRIENDS OF BLACKWATER**

Friends of Blackwater (FOB) is a 501(c)(3) non-profit organization formed in 2000 with the purpose of protecting and promoting the unique scenic, recreational, and ecological values of the land and waters in the Blackwater area of North eastern West Virginia. Remediating AMD pollution that degrades the Blackwater River is an FOB priority. In 2002, FOB established a North Fork Watershed Project office in Thomas, West Virginia on the banks of the North Fork of the Blackwater, and began to build local support for remediation and restoration of the watershed. Now in Davis, we work on trails, water monitoring, flying squirrel research and educating folks about the amazing Blackwater River Watershed: celebrating West Virginia's scenic "Crown Jewel" while pushing for solutions to water pollution.



*Briana All studies flying squirrels*



*Emily Samargo takes water quality measurements.*



*Volunteer Roy Teter stands inside a foundation at Lime Rock.*



*Evan Supak measures the flow of the North Fork.*



*Athey Lutz leads a group of volunteers in a trail building party.*



*From left to right: Tommy Ashton, Arlene Karesh, Martin Christ (WVDEP) and Lon Marshall participate in monthly water quality monitoring.*



*"I love the Blackwater River and her amazing canyon because of the sheer natural beauty. To ride her rapids is unlike any other feeling I have ever experienced in my life, to sit on her canyon rim to watch a sunset or watch a storm roll in is awesome. Natural wonders like this need and deserve to be protected, now, and for future generations to enjoy and marvel at."*

*- Mike Moore, VP of Harpers Ferry Outdoor Festival and lover of the Blackwater*



## **OUR RECOMMENDATIONS AND GOALS FOR THE RIVER**

The Blackwater River Watershed has attracted adventurers, nature lovers, and tourists for one hundred and fifty years. We who love this River want to heal its wounds.

The North Fork of the Blackwater, as well as Tub Run and Findley Run in the main stem of the Blackwater, are significantly impacted by acid mine drainage (“AMD”). This pollution degrades these waterways by making the stream chemistry too acidic (low Ph.) to support healthy aquatic life.

The West Virginia Department of Environmental Protection (“DEP”) has spent some \$9,000,000 to clean up mine-scarred lands in the Blackwater Watershed. This has reduced the amount of AMD entering the River -- because old mine spoil is covered, and draining mine portals are closed. However, some experimental passive water treatment systems have not been effective, and low pH levels are still injuring the river.

The DEP currently operates a limestone “doser” above the Town of Davis, to deal with pollution from Beaver Creek. Because AMD in Beaver Creek has been reduced, we recommend moving the doser (or putting another doser) below Thomas, in-stream on the North Fork, to better deal with three major sources of pollution in the Blackwater: Mine Portal 29, Long Run, and Tub Run. This limestone treatment would also remediate acid rain-impacted water coming from Blackwater Falls State Park and Big Run.

The Blackwater River is one of the most iconic waterways in West Virginia. Improving and cleaning up this beloved landscape will be good for the local economy and will make these waters safer for the public and the natural world. Let’s act together to have a clean Blackwater River Watershed!



**Conoeing on the Blackwater in Canaan Valley.**



**Snowboarding at Timberline.**



**Mountain Biking in the Canyon.**



**Enjoying a beautiful fall hike in the Blackwater area.**

*“The Blackwater is the most unique, compelling and captivating river in the state. It has something for everyone from slow water in the headwaters, to the rush and crash of whitewater in the canyon. The change in scenery is severe, beautiful and transforming of people as it is of its view.”*

*- Gary Berti, Trout Unlimited*





## **SUPPORT FOR OUR WORK**

### ***BUSINESS***

AmericaView  
Big Johns  
Boomtown Java  
Canaan Trading Company  
Colabrese Old General Store  
East West Printing  
The Golden Anchor  
H and H Hardware  
Hellbenders Burritos  
Highland Prospects  
Home Depot  
Lowes  
Massage Therapies of Davis  
McClain Printing  
Mountain Mist  
Mountain State Brewing  
Mt. Top Citgo  
Mt Top Realty  
Phillips Electronics  
Purple Fiddle  
Siriannis  
Stevens Florist  
The Ski Barn  
Timberline  
Tip Top  
White Grass  
Wild Ginger & Spice  
Windwood

### ***NONPROFITS***

Canaan Valley Institute  
Girl Scouts  
Google Earth  
International Mountain Biking Association  
Thomas Education Center  
Trout Unlimited  
Tucker County Trails  
Tucker County Historical Society  
Winter Wildlands Alliance

### ***GOVERNMENT AGENCIES***

Canaan Valley National Wildlife Refuge  
Monongahela National Forest  
Blackwater Falls State Park  
WV Department of Environmental Protection  
WV Division of Natural Resources  
Office of Surface Mining and Reclamation

### ***FUNDERS***

Appalachian Community Fund  
Appalachian Stewardship Foundation  
Best Buy  
Colcom Foundation  
Friends of the 500th  
Generations United  
MARPAT  
National Fish and Wildlife Foundation  
Nisource  
Norcrosse  
Oakland Foundation  
Project FLOW  
Southern Partners  
Three River Quest  
Tucker Community Foundation  
WV Humanities Council  
WV Stream Partners

### ***OUR AMERICORPS VISTAS***

Janel Farron  
Meredith Ballard  
Athey Lutz  
Derek Napenas  
Nick Fiorino  
Josh Nease  
Seth Pitt  
Rachelle Thorne  
Andy Herrmann  
Ben Wiercinski  
Emily Samargo  
Corrine Evans  
Joyce Edgell  
Lisa Porter  
Ilona Volker



*AmeriCorps VISTAs Meredith Ballard and Janel Farron.*



## GOVERNMENT AGENCIES WHO WORK ON WATER QUALITY



### **WV Department of Environmental Protection (DEP)**

Division of Abandoned Mine Lands

Rob Rice 304-926-0499

Jon Knight Planner 304-842-1900

Special Programs: Ed Hamrick 304-926-0499

Environmental Advocate John King 1-800-654-5227

DEP Environmental Enforcement Romney:

Robin Dolly 304-822-7266



### **Office of Surface Mining and Reclamation WV Field Office:**

Rick Buckley & Nancy Roberts Charleston 304-347-7162

### **WV DNR**

Endangered Species Specialist Craig Stihler Elkins 304-637-0245

Conservation Officer Tucker County: Terry Fluharty 304 771-3431

Blackwater Falls State Park & Canaan Valley State Park

Rob Gilligan Superintendent: 304-259-5216



### **U.S. Forest Service, Monongahela National Forest**

Headquarters Elkins 304-636-1800

Cheat Potomac Ranger District: Troy Waskey, District Ranger

Petersburg Office: (304) 257-4488 ext. 13

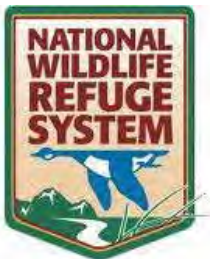
Parsons Office: (304) 478-2000 ext. 104



### **Canaan Valley National Wildlife Refuge**

Main Office 304-866-3858

Friends of the 500th 304-866-3858



*"I love the Blackwater River because it provides food if you fish, recreation if you canoe or kayak, and beauty for anyone that takes the time to look at it."*

*- Briana All, Former FOB Staff Member and Student*







## **YOU CAN HELP**

### **Our Projects:**

Save Our Squirrel field work  
Water Monitoring and Planning  
Research and Celebrate Heritage  
Trail Building & Maintenance  
Bike Park Initiative

**Join, Volunteer, Donate:** [www.saveblackwater.org](http://www.saveblackwater.org)

### **Frie n d s of Blackwater**

#### **Davis Office:**

571 Douglas Road  
PO Box 247  
Thomas, WV 26292  
304-345-7663

[info@saveblackwater.org](mailto:info@saveblackwater.org) [www.saveblackwater.org](http://www.saveblackwater.org)