



Water
Resource
Center

Southwestern Pennsylvania Commission

Do's and Don'ts – MS4 Good Housekeeping:

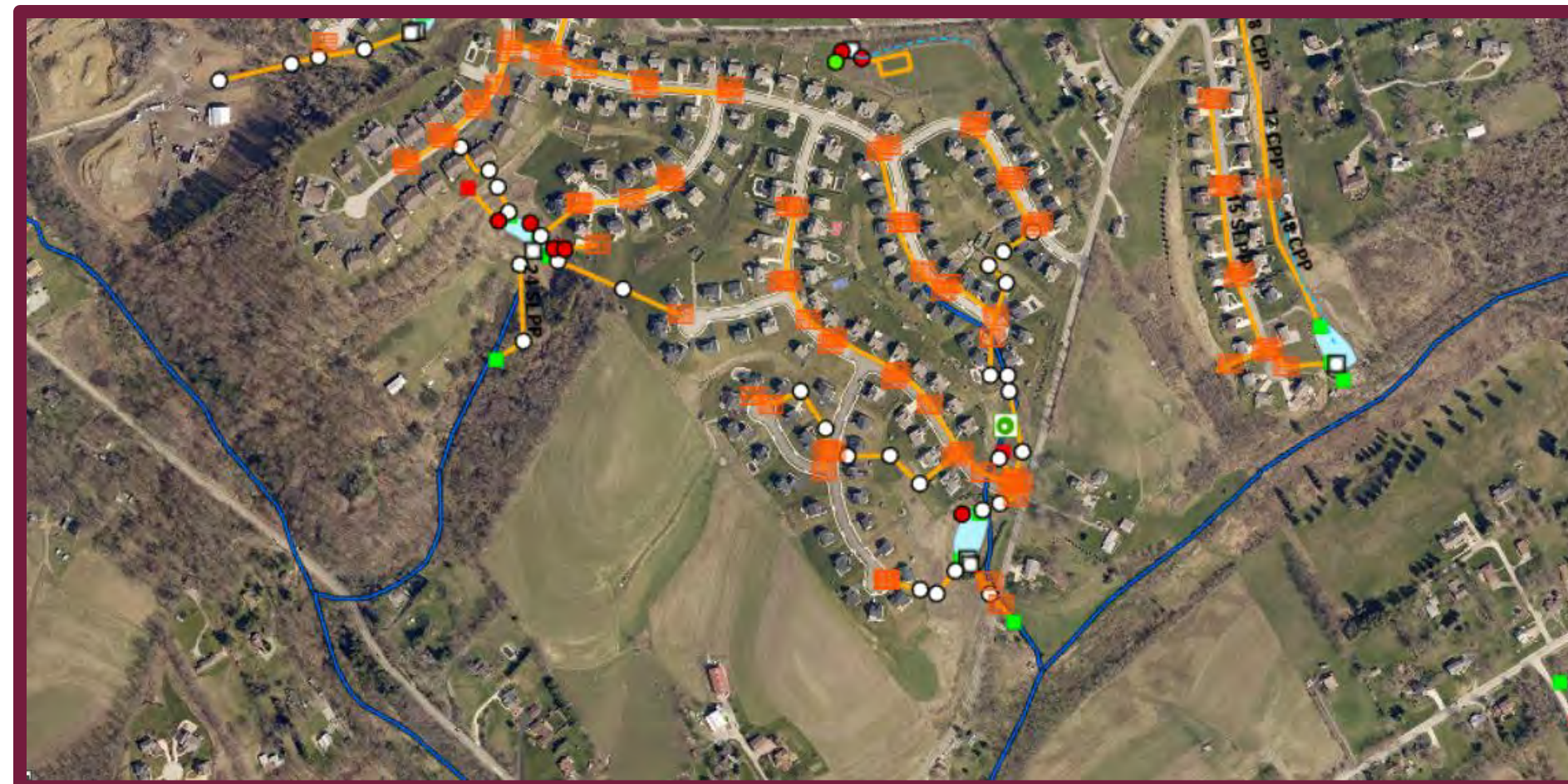
A general overview of Minimum
Control Measure #6



Shawn Fabian, CPESC, CPSWQ

What exactly is included in the MS4?

- > Stormwater Conveyances or system of conveyances that is owned by a public entity that discharges to the waters of the U.S.
 - > Inlets, pipes, swales, curbing, detention BMPs, infiltration BMPs, Water Quality BMPs, outfalls
- > Not a combined sewer system
- > System is located within the Urbanized Areas designated by the Census.



6 Minimum Control Measures

MCM 1: Public Education and Outreach

MCM2: Public Involvement/Participation

MCM 3: Illicit Discharge Detection and Elimination

MCM 4: Construction Site Stormwater Runoff Control

MCM 5: Post Construction Stormwater Runoff Control

MCM 6: Pollution Prevention and Good Housekeeping

MCM #6: Pollution Prevention/Good Housekeeping

- > The permittee must develop and implement an Operation and Maintenance program that includes a training component and has the goal of preventing and reducing pollutant runoff from operations, facilities and activities under the control of the permittee.
- > Three BMPs are included in MCM #6

MCM 6: BMP 1

- > Identify and document all operations that are owned or operated by the permittee and have the potential for generating pollution in stormwater runoff to the regulated small MS4
 - > Included contractors performing work for the permittee

MCM 6: BMP 1 Activities



MCM 6: BMP 1 Activities



MCM 6: BMP 1 Activities



MCM 6: BMP 1 Activities



MCM 6: BMP 1 Activities



MCM 6: BMP 1 Activities



MCM 6: BMP 1 Facilities



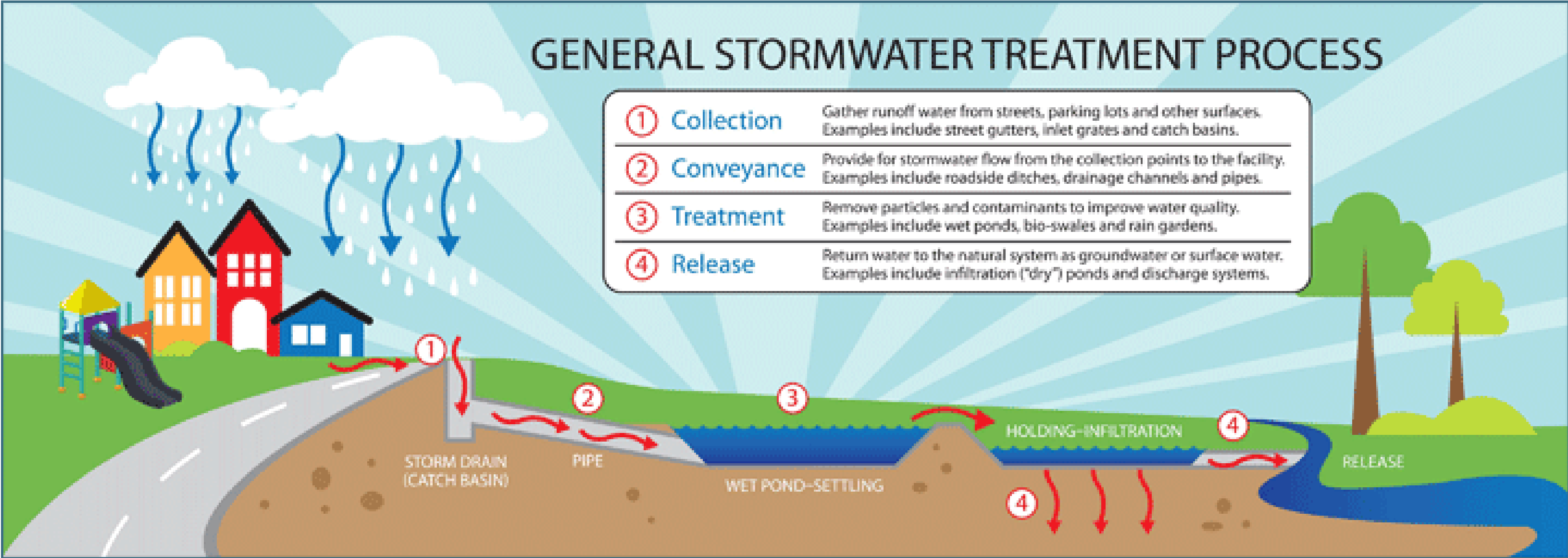
MCM 6: BMP 1 Facilities



MCM 6: BMP 1 Facilities



MCM 6: BMP 1 Facilities



MCM 6

- > Municipalities with an MS4 shall create/have an inventory of all operations and land uses that may contribute to pollution in stormwater runoff
- > The inventory shall be reviewed annually and updated as needed.

Good Housekeeping for Municipal Operations

Inventory of Facilities/Activities

Municipal Roads

Contact:

Responsibility	Frequency	Actions	Additional Comments
Signage	Quarterly	Up to date, tailored to surrounding area, effective message	
Street Sweeping	Spring & Post-Storm Events, if needed	Street sweepings are put on a schedule	
		Sweepings are disposed of properly	
		Sweepings are hauled to a designated dumpster	
Storm Inlets	On Schedule/As Needed	Inlets are checked at least once per permit cycle	Inlets are inspected and checked for illicit discharges
		Inlets will be stenciled, on-going project	
		Vactor trucks clean out inlets as needed; dispose of sediment properly	
		Inlets will be looked at/inspected after significant storm	

MCM 6: BMP 2

- > Develop, implement and maintain a written O&M program for all operations that could contribute to the discharge of pollutants from the regulated small MS4 as identified under BMP #1 just discussed
- > Program shall stress pollution prevention and good housekeeping measures, contain site-specific information

MCM 6: BMP 2

- > O&M Program shall include:
 - > Management practices, policies and procedures to reduce or prevent discharge of pollutants.
 - > Maintenance activities, maintenance schedules and inspection procedures to reduce the potential for pollutants to reach the MS4
 - > Controls for reducing or eliminating the discharge of pollutants from streets, roads, highways, municipal parking lots, maintenance and storage yards, waste transfer stations, fleet or maintenance shops
 - > Controls for solid chemical products stored
 - > Proper disposal of waste

MCM 6: BMP 2

EVALUATION OF EXISTING BEST MANAGEMENT PRACTICES (BMPs)

Inspect the facility using this list of existing BMPs:

BMP Description	Date Reviewed	Comments
Keep vehicle maintenance areas clean		
Regular pavement sweeping		
Control spills		
Practice proper waste disposal		
Eliminate non-storm water discharges		
Properly store materials to minimize exposure		
Store wastes and recycling materials in proper place		
Cover road salt storage area		
Routinely clean catch basins		
Keep equipment and vehicles clean		
Use drip pans under parked, stored vehicles		
Implement construction BMPs as necessary		
Wash equipment and vehicles in designated areas		
Provide spill protection at the fuel islands		
Cover trash bins		

MCM 6: BMP 2



MCM 6: BMP 2



MCM 6: BMP 2



MCM 6: BMP 2



MCM 6: BMP 2



MCM 6: BMP 2



MCM 6: BMP 2



MCM 6: BMP 3

- > Develop and implement an employee training program
- > All relevant employees and contracts shall receive training
 - > Public works staff
 - > Building, zoning and code enforcement
 - > Engineering staff
 - > Police and fire responders
- > Update the training program each year of General Permit
- > Documentation of training shall be included in annual status report

Permit Reporting and Records

- > Deadline for Annual Status Reports are due by September 30
- > Based on activities performed between July 1 of the previous calendar year and June 30 of the current calendar year
- > Annual report fee = \$500
- > MS4 municipalities must make available to the public all plans, programs, maps and reports

Not Documented, Not Done



Resources



Water
Resource
Center

Southwestern Pennsylvania Commission



pennsylvania

DEPARTMENT OF ENVIRONMENTAL
PROTECTION



Pennsylvania Clean Water Academy



HRG

Herbert, Rowland & Grubic, Inc.
Engineering & Related Services
AN EMPLOYEE-OWNED COMPANY

Southwestern Pennsylvania Commission

Contact Information

- Johnna Zona jzona@hrg-inc.com Western PA
- Shawn Fabian sfabian@hrg-inc.com Eastern PA



